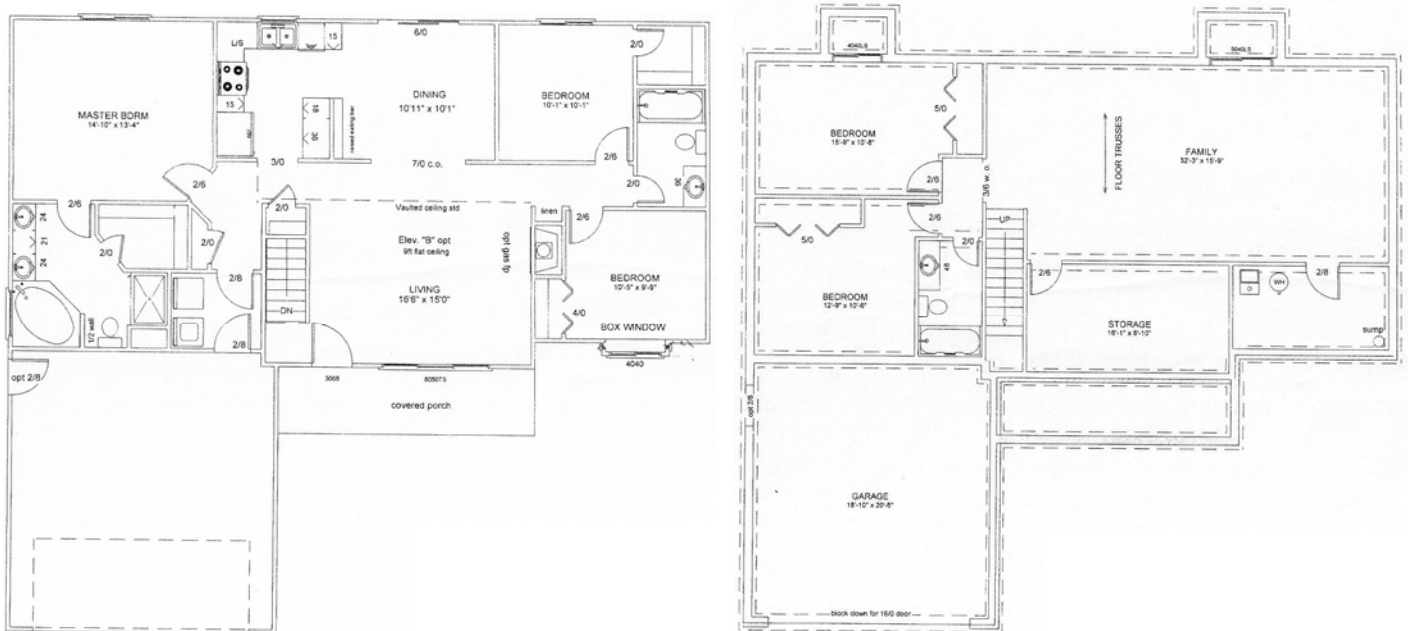
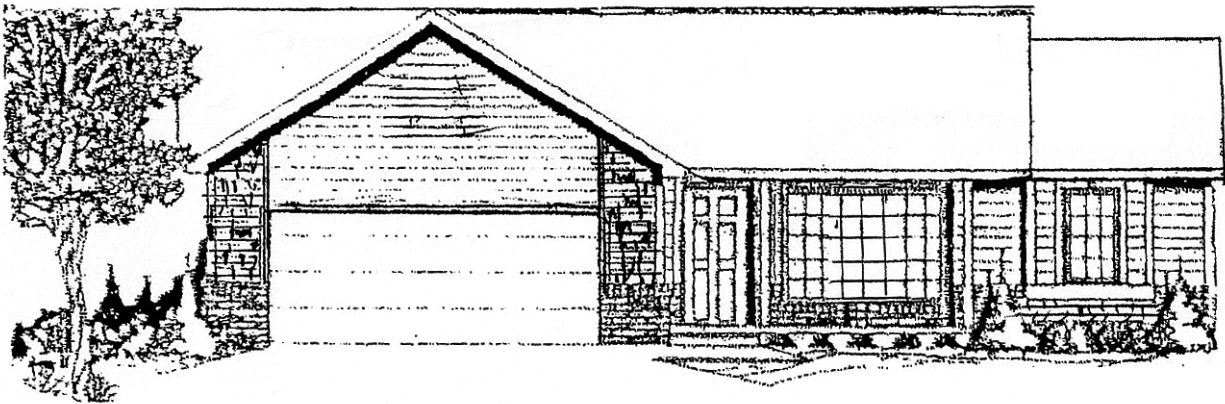


Marketed Exclusively By  
**Preferred Properties of Kansas, Inc.**  
[www.preferrednewhomes.com](http://www.preferrednewhomes.com)

**Comfort Homes, Inc. Plan # 200-1310 - Meadowlark**



**Due to design restrictions, please verify with Community Manager  
on availability of this plan for your New Home Community**