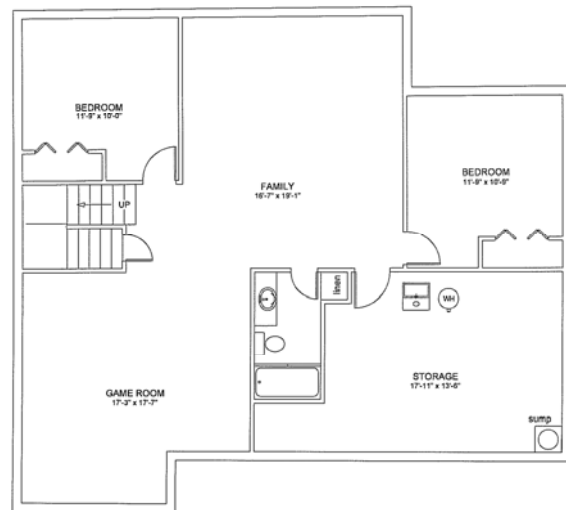
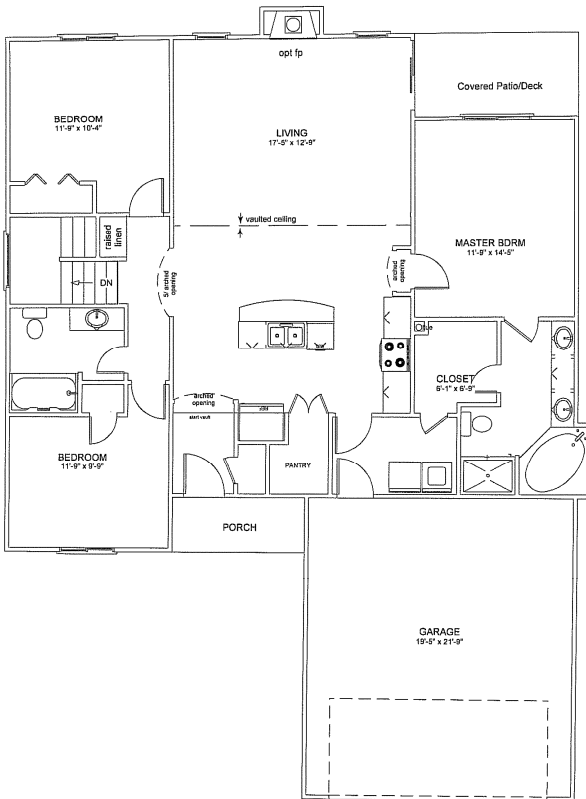
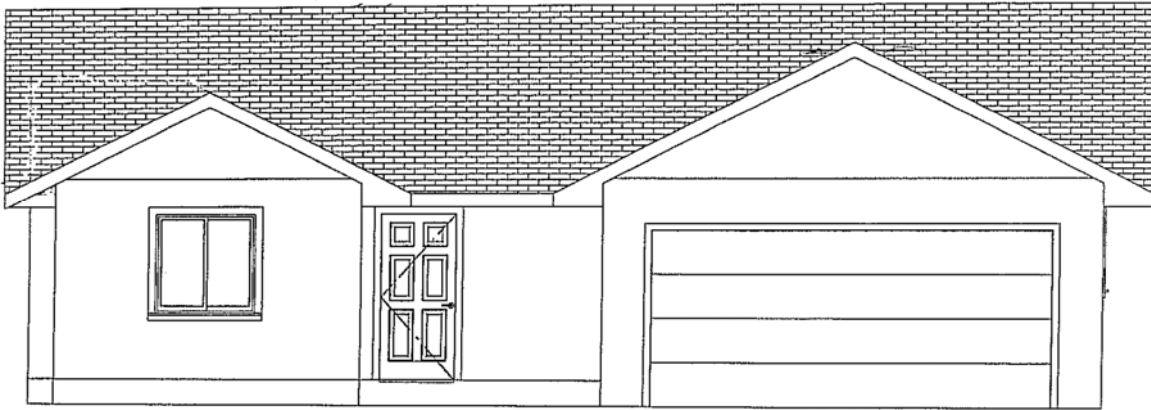


Marketed Exclusively By  
**Preferred Properties of Kansas, Inc.**  
[www.preferrednewhomes.com](http://www.preferrednewhomes.com)

**Comfort Homes, Inc.**

**Plan #200- 1404 - Brihana**



**Due to design restrictions, please verify with Community Manager  
 on availability of this plan for your New Home Community**